



**POWERSHOCK**  
RUBBER SOLUTIONS FOR FITNESS

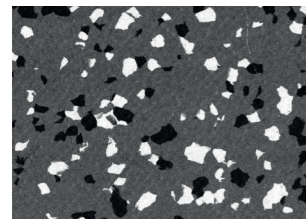
**Gerflor**<sup>®</sup>  
theflooringroup

# POWERSHOCK 80

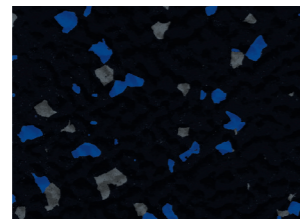
## CARDIO & FREE-WEIGHT ZONE

### Durability and resistance to impacts:

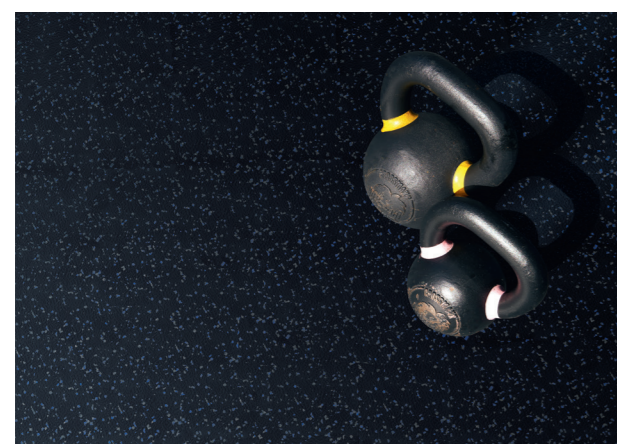
- ✓ Easy to clean and maintain thanks to its vulcanised, non-porous wear layer
- ✓ Highly durable
- ✓ Highly resistant to static loads and light weights: suitable for the use of kettlebells up to 25kg, dropped from a 1m height
- ✓ Non-glued, easy to install interlocking tiles



DARK GREY



BLACK

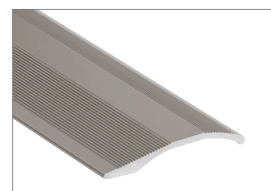


### ACCESSORIES

(available from Romus)

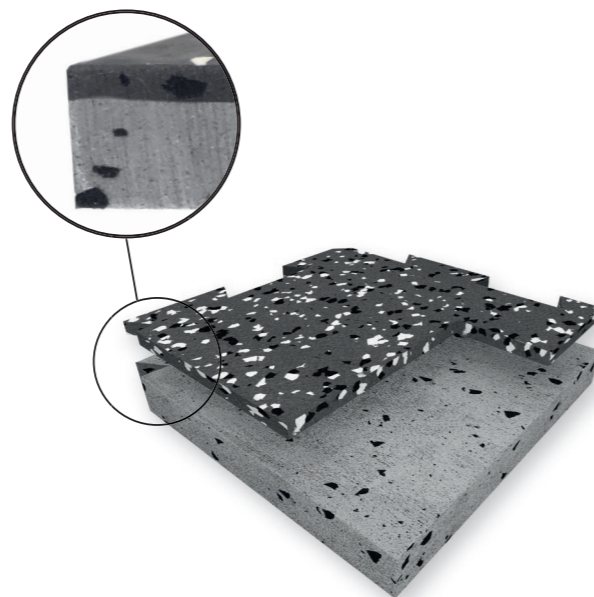
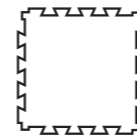


Aluminium reducer  
Unit: 3lm



Multilevel coverstrip  
Unit: 2,7lm

8mm  
INTERLOCKING TILES WITH  
DOVETAIL EDGES

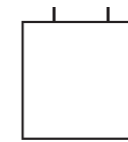


# POWERSHOCK 300

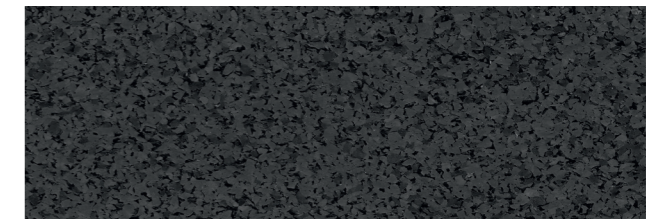
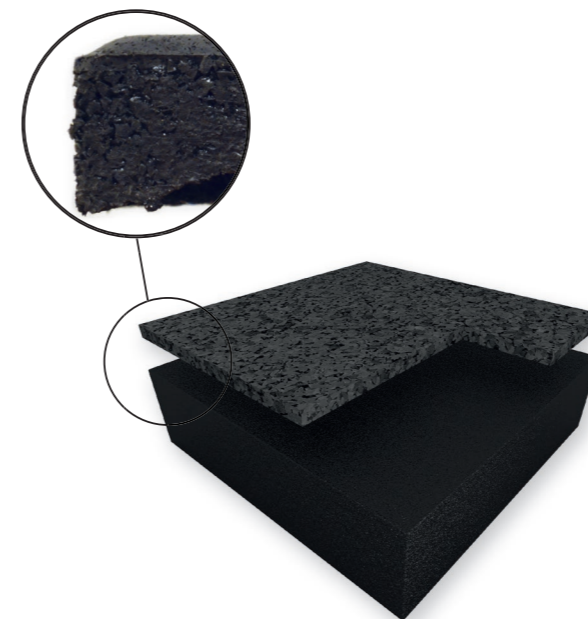
## CROSSFIT & HEAVY-WEIGHT AREA

### Outstanding protection of floor and fitness equipment:

- ✓ High shock absorption and sound insulation
- ✓ Great protection of the subfloor: withstands weights up to 200kg dropped from a 2m height
- ✓ Non-glued, easy to install tiles with connector pins



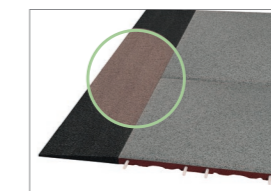
30mm  
TILES WITH PRE-INSTALLED  
CONNECTOR PINS



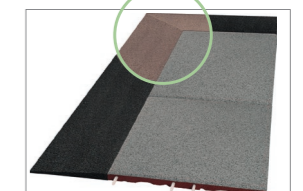
DARK GREY



### ACCESSORIES



Ramp edge rubber - 30mm  
1lm



Corner ramp edge rubber - 30mm  
2 units (1000 x 250mm)



POWERSHOCK	
80	300
CARDIO & FREE-WEIGHT AREA	CROSSFIT & HEAVY-WEIGHT AREA

## DESCRIPTION

Thickness	NF EN ISO 24346	mm	8	30 (± 2)
Weight	NF EN ISO 23997	kg/tile	11.9	6.8 (± 0.2)
Size	NF EN ISO 24342	mm	980 x 980 (incl. dovetails)	500 x 500 (± 0.8%)

## CLASSIFICATION

Fire resistance	EN 13501-1	class	B <sub>fl,s1</sub>	C <sub>fl,s1</sub>
VOC	ISO 16000-6	class	A+	A+

## PERFORMANCE

Dimensional stability	NF EN ISO 23999	%	< 0.3	< 0.1
Abrasion	EN ISO 5470-1	g	< 0.5	1.5
Light resistance	EN ISO 20105 - B02	level	4	3
Indentation resistance	EN 1516	mm	<0.1	0.12
Slip resistance in dry condition	EN 13036-4	unit	80-110	80-110
Sound insulation	EN ISO 717/2	dB	13	24
Hardness shore A	Int.	-	> 75	60

RC-Lyon B 726 580 152 - JPE - Photo credit: Gerflor - Istockphoto - 04/2021 - Documentation indicative price: 0,60€

## WE CARE | WE ACT. Our commitments for a sustainable future

<p><b>CARBON FOOTPRINT*</b></p> <p>-20 % kg CO<sub>2</sub> equivalent/m<sup>2</sup> between 2020 and 2025</p>	<p><b>BIOSOURCED CONTENT**</b></p> <p>10 % by 2025</p>	<p><b>RECYCLED CONTENT</b></p> <p>30 % by 2025</p>	<p><b>ADHESIVE FREE***</b></p> <p>35 % by 2025</p>	<p><b>ANNUAL VOLUME RECYCLED</b></p> <p>60,000 t by 2025</p>
---	--	--	--	--

\* Scopes 1 & 2 defined in the GHG protocol \*\* % of activity with biosourced materials \*\*\* % of activity with adhesive free solutions

**Gerflor** Be connected!

www.gerflor.com

#Gerflor

### FRANCE:

Gerflor - Service Express:

☎ N° Azur 0 810 569 569 ☎ N° Azur FAX 0 810 569 570

e-mail: contactfrance@gerflor.com

### OTHER COUNTRIES:

Gerflor International

Tel: +33 (0)4 74 05 40 00 - Fax: +33 (0)4 74 05 03 13

e-mail: gerflorcontract@gerflor.com